

Pass Boxes and Transfer Hatches

The Leading Solution for Controlled Environment Protection



Infinity® Pass Box



Infinity® Transfer Hatch



Static Pass Box





Static Pass Box



Infinity® Transfer Hatch



Infinity® Pass Box



Controlling the ingress of particulate contamination into cleanrooms and other controlled environments is paramount in order to maintain the integrity of products and processes. Personnel traffic is the most important factor which must be controlled.

Esco Pass Boxes and Transfer Hatches are a cost effective solution as they allow materials to be transferred into the controlled environment without actual personnel movement. They may also be used to protect the external environment from egress of contamination,

for example, in biological safety laboratory applications.

The table below shows the different models of static pass boxes Esco offer.

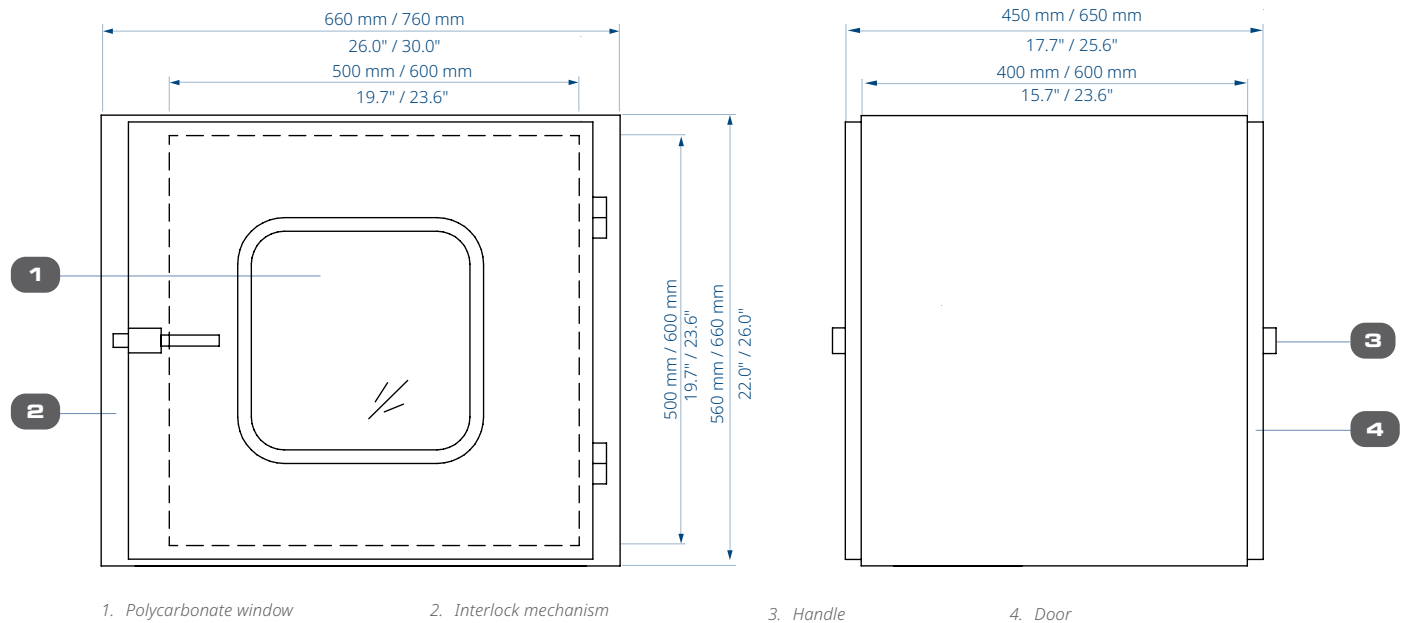
Available Models			
Model	Internal Dimensions	Construction	Interlock
EPB-A504050	500 x 400 x 500 mm (19.7" x 15.7" x 19.7")	Powder coated steel, non coved corners, polycarbonate viewing window	Mechanical
EPB-A606060	600 x 600 x 600 mm (23.6" x 23.6" x 23.6")		
EPB-B504050	500 x 400 x 500 mm (19.7" x 15.7" x 19.7")	Stainless steel, non coved corners, polycarbonate viewing window	Mechanical
EPB-B606060	600 x 600 x 600 mm (23.6" x 23.6" x 23.6")		
EPB-S454645	450 x 460 x 450 mm (17.7" x 18.1" x 17.7")	Stainless steel, all coved corners, full tempered glass door	Mechanical
EPB-S616161	610 x 610 x 610 mm (24" x 24" x 24")		
SPB-S606060	600 x 600 x 600 mm (23.6" x 23.6" x 23.6")	Stainless steel, coved corner at it's base, tempered glass viewing window	Electromagnetic

Infinity® Pass Box

Main Features

- Mechanical interlock is reliable, maintenance-free, fail safe and maintains cleanroom integrity by preventing both doors from being opened at the same time.
- All Esco products are manufactured for the most demanding controlled environment applications.
- All components are designed for maximum chemical resistance and enhanced durability for a long service life.
- The main body of the pass box is constructed of either powder-coated electrogalvanized or stainless steel.
- The pass box base surface is constructed of stainless steel, making the work zone easy to clean.
- Polycarbonate window provide a clear view of the internal chamber.
- Standard 1 year warranty.

Infinity[®] Pass Box Technical Specifications



General Specifications, Infinity [®] Pass Box			
Model		EPB-A	EPB-B
Model code		EPB_ 504050	EPB_ 606060
External dimensions (W x D x H)		660 x 450 x 560 mm (26.0" x 17.7" x 22.0")	760 x 650 x 660 mm (30.0" x 25.6" x 26.0")
Internal dimensions (W x D x H)		500 x 400 x 500 mm (19.7" x 15.7" x 19.7")	600 x 600 x 600 mm (23.6" x 23.6" x 23.6")
Material of Construction (MoC)	Body	Powder coated EG Steel exterior and interior with SS304 base	
	Viewing window	Polycarbonate	
Door Opening		Straight through only	
Handle		Mechanical handle	
Flanges		A set (2 pcs) of removable flanges	
Optional Accessories	Support Stand (if required)	2-leg type	
	UV light	✓	
Customization	LED light	✓	
	Upgrade Electromagnetic Interlock	✓	
Net Weight		42.5 kg (93.7 lbs)	55.8 kg (123 lbs)
Shipping Weight		61.6kg (136 lbs)	80.4 kg (177 lbs)
Shipping Dimensions, Maximum (W x D x H)		850 x 740 x 800 mm (33.4" x 29.1" x 31.4")	830 x 820 x 870 mm (32.6" x 32.2" x 34.2")
Shipping Volume, Maximum		0.5 m ³ (17.6 cu.ft.)	0.59 m ³ (20.8 cu.ft.)

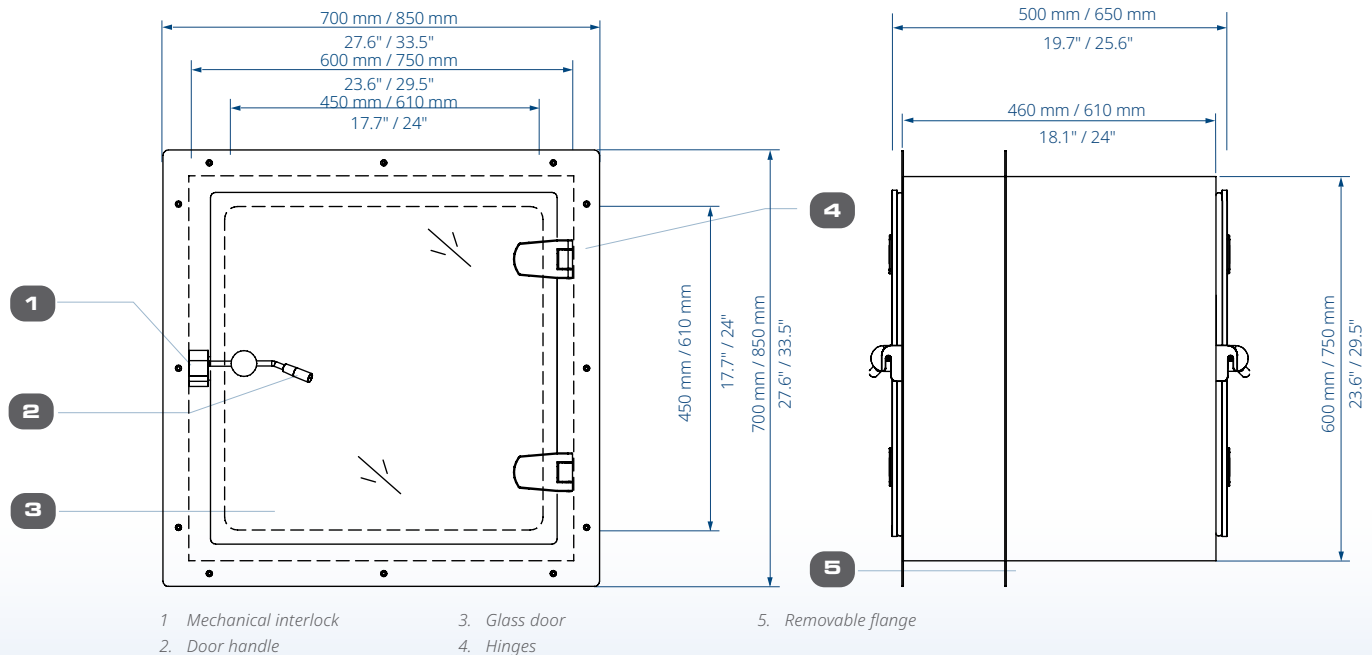
Infinity® Transfer Hatch

Main Features

- Mechanical interlock is reliable, maintenance-free, fail safe and maintains cleanroom integrity by preventing both doors from being opened at the same time.
- All Esco products are manufactured for the most demanding controlled environment applications.
- All components are designed for maximum chemical resistance and enhanced durability for a long service life.
- The main body of the pass box is constructed of pharmaceutical-grade stainless steel.
- The internal side walls of the pass box are constructed from a single piece of stainless steel, with coved corners for easy cleaning.
- Transparent 10 mm (0.3") tempered glass doors provide visibility into the interior. Frameless construction is easy to clean with no joints for contaminants to accumulate.
- Durable feather edge rubber gasketed door seals maintain cleanroom integrity and are easy to clean.
- Pass box hardware has been custom designed for reliable service, featuring large, durable hinges, and ergonomic handles.
- One stainless steel mounting flange is included.



Infinity® Transfer Hatch Technical Specifications



General Specifications, Infinity® Transfer Hatch			
Model		EPB-S	
Model code		EPB-S454645	EPB-S616161
External dimensions (W x D x H)		600 x 500 x 600mm (23.6" x 19.7" x 23.6")	750 x 650 x 750mm (29.5" x 25.6" x 29.5")
Internal dimensions (W x D x H)		450 x 460 x 450 mm (17.7" x 18.1" x 17.7")	610 x 610 x 610 mm (24" x 24" x 24")
Material of Construction (MoC)	Body	Powder coated EG Steel exterior and interior with SS304 base	Full SS304
	Door		
Door Opening		Full glass (10 mm thickness)	
Handle		Straight through only	
Flanges		Mechanical handle	
Optional Accessories	Support Stand (if required)	1 fix flange & 1 removable flange	
	UV light	✓	
Customization	LED light	✓	
	Upgrade Electromagnetic Interlock	✓	
Net Weight		33 kg (72 lbs)	54.2 kg (119 lbs)
Shipping Weight		40 kg (88 lbs)	64.4 kg (142 lbs)
Shipping Dimensions, Maximum (W x D x H)		730 x 700 x 730 mm (28.7" x 27.5" x 28.7")	850 x 750 x 780mm (33.4" x 29.5" x 30.7")
Shipping Volume, Maximum		0.37 m³ (13.1 cu.ft.)	0.49 m³ (17.3 cu.ft.)

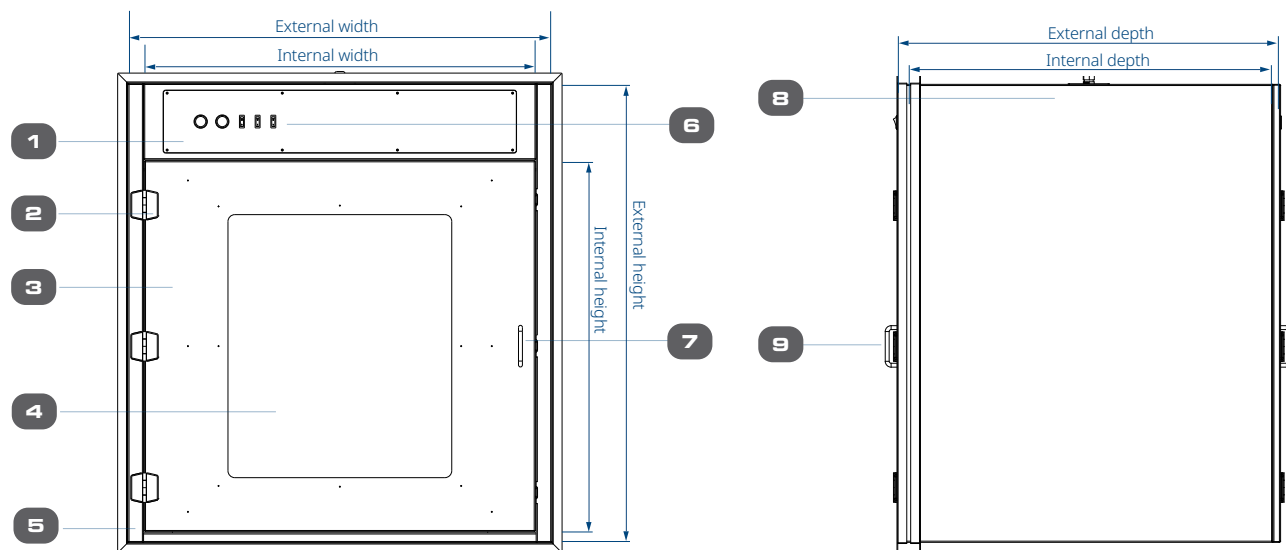
Static Pass Box

Main Features

- Equipped with validated electro-magnetic interlocking doors that prevent both doors from being opened at the same time.
- All Esco products are manufactured for the most demanding cleanroom applications.
- All components are designed for maximum chemical resistance and enhanced durability for long service life.
- It is full stainless steel 304 construction with coved corners at its base for easy cleaning.
- Durable transparent tempered glass doors provide clear visibility into the interior.
- Convenient operation by identifiable red/green indicator lights to signal door status.

Standard sizes	Internal Dimensions (Width x Depth x Height)	External Dimensions (Width x Depth x Height)
SPB-S606060	600 x 600 x 600 mm (23.6" x 23.6" x 23.6")	780 x 680 x 870 mm (30.7" x 26.8" x 34.3")
SPB-S606075	600 x 600 x 750 mm (23.6" x 23.6" x 29.5")	780 x 680 x 1020 mm (30.7" x 26.8" x 40.2")
SPB-S616161	610 x 610 x 610 mm (24.0" x 24.0" x 24.0")	790 x 690 x 880 mm (31.1" x 27.2" x 34.6")
SPB-S757575	750 x 750 x 750 mm (29.5" x 29.5" x 29.5")	930 x 830 x 1020 mm (36.6" x 32.7" x 40.2")
SPB-S100100100	1000 x 1000 x 1000 mm (39.4" x 39.4" x 39.4")	1180 x 1080 x 1270 mm (45.3" x 42.5" x 50.0")

*Refer to table for internal and external dimensions



- 1. Indicator lights
- 2. Hinges
- 3. Stainless Steel door

- 4. Tempered glass viewing window
- 5. Flanges
- 6. Simple switches

- 7. Electromagnetic lock
- 8. Pre-wired cable
- 9. D shaped handle

General Specifications, Static Pass Box

Model			SPB
Model Code			SPB-S
Material of Construction (MoC)	Body		Full SS304
	Viewing Window		Tempered glass
Handle			D-shaped
Door Opening			Straight through
Operating Controller			Simple rocker switch for on/off
Door Lock System			Electromagnetic interlocking doors with round magnets for double lock
Light Indicator			Red and green
Electrical Code	1 - 220-240 VAC 50/60 Hz		✓
	2 - 110-130 VAC 50/60 Hz		✓
	3 - 100-110 VAC, 60 Hz		✓
Optional Accessories	A set (2 pcs) of removable flanges		✓
	Support Stand (if required)		✓
	UV light		✓
	LED light		✓
	Sentinel microprocessor		✓
Customization	Door Opening	L-shaped	✓
		3-way	✓
	Upgrade to SS316(L)		✓



Infinity® Pass Boxes and Cleanroom Transfer Hatch

Static and Classic!

Electromagnetic Interlock

SPB

Stainless steel (SS) doors with double-layered tempered glass viewing window



SS

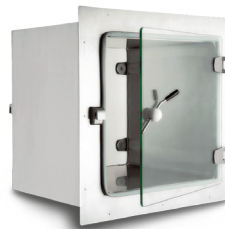
Stainless Steel 304

Full SS 304, coved internal corners at the base, with indicator lights for door status

Mechanical Interlock

EPB-S

Tempered glass doors



SS

Stainless Steel 304

Full SS 304, all-coved internal corners with flanges (standard inclusion)

Mechanical Interlock

EPB-B

Stainless steel (SS) doors with polycarbonate viewing window



SS

Stainless Steel 304

Full SS 304, non-coved corners

Mechanical Interlock

EPB-A

Electrogalvanized (EG) steel doors with polycarbonate viewing window



EG

Powder-coated EG Steel

EG steel exterior and interior, SS 304 internal base, non-coved corners

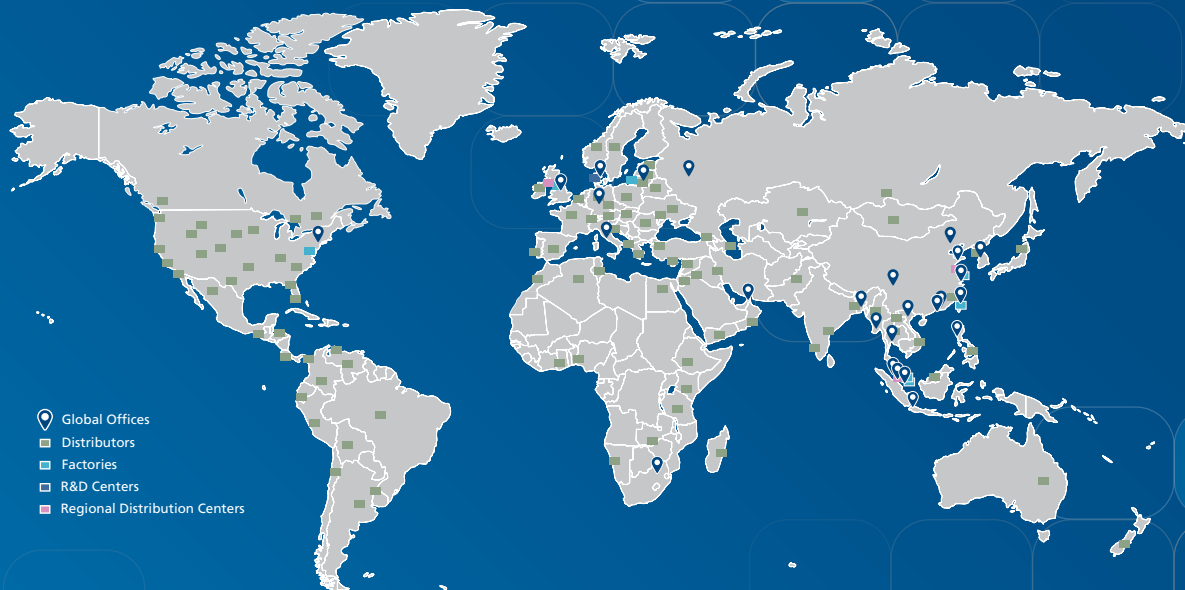
Esco Pharma's Infinity® Pass Box and Cleanroom Transfer Hatch maintains cleanroom integrity with its reliable and maintenance-free interlocking mechanism by preventing both pass box doors from opening at the same time and by limiting personnel traffic during aseptic transfers in-between rooms.



*Know the Right Box
for You!*

ESCO LIFESCIENCES GROUP NETWORK

42 Locations in 21 Countries All Over the World



- 📍 Global Offices
- 🏢 Distributors
- 🏭 Factories
- 🔬 R&D Centers
- 📦 Regional Distribution Centers



Air Shower
 Aseptic Containment Isolator (ACTI)
 Ceiling Laminar Airflow Units
 Cleanroom Transfer Hatch
 Containment Barrier Isolator (CBI)
 Downflow Booth (DFB)
 Dynamic Floor Laminar Hatch
 Dynamic Pass Box
 Evidence Drying Cabinet
 Garment Storage Cabinet
 General Processing Platform Isolator (GPPI)
 Laminar Flow Horizontal Trolley
 Laminar Flow Straddle Units, Single and Double
 Laminar Flow Vertical Trolley
 Pass Box
 Soft Wall Cleanroom
 Sputum Booth
 Ventilated Balance Enclosure (VBE)
 Weighing and Dispensing Containment Isolator (WDCI)

Since 1978, Esco has emerged as a leader in the development of controlled environment, laboratory and pharmaceutical equipment solutions. Products sold in more than 100 countries include biological safety cabinets, fume hoods, ductless fume hoods, laminar flow clean benches, animal containment workstations, cytotoxic cabinets, hospital pharmacy isolators, and PCR cabinets and instrumentation. With the most extensive product line in the industry, Esco has passed more tests, in more languages, for more certifications, throughout more countries than any biosafety cabinet manufacturer in the world. Esco remains dedicated to delivering innovative solutions for the clinical, life science, research and industrial laboratory community.



Esco Pharma
 19 Changi South Street 1,
 Singapore 486779
 Tel: +65 65420833
 Email: csis.pharma@escolifesciences.com

Esco Technologies, Inc.
 2512 Metropolitan Drive, Suite 120 B
 Feasterville-Trevose, PA 19053-6738
 Tel: +1 215 322 2155
 Email: eti.pharma@escolifesciences.com

Esco GB Ltd
 Unit 2 R-evolution @ Gateway 36, Kestrel Way,
 Barnsley, S70 5SZ
 Tel: +44 (0) 1226 360 799
 Email: egb.info@escolifesciences.com



Esco Lifesciences Offices: Bangladesh | China | Denmark | Germany | Hong Kong | Indonesia | Italy | Lithuania | Malaysia | Myanmar | Philippines | Russia | Singapore | South Africa | South Korea | Taiwan | Thailand | UAE | UK | USA | Vietnam



901050, Cleanroom, LFB, Benchtop, Letter, C, 030725
 Esco can accept no responsibility for possible errors in catalogues, brochures and other printed
 materials. Esco reserves the right to alter its products and specifications without notice. All trademarks
 and logos are the property of Esco and the respective companies.